

CORAL REEFS & COASTAL COMMUNITIES

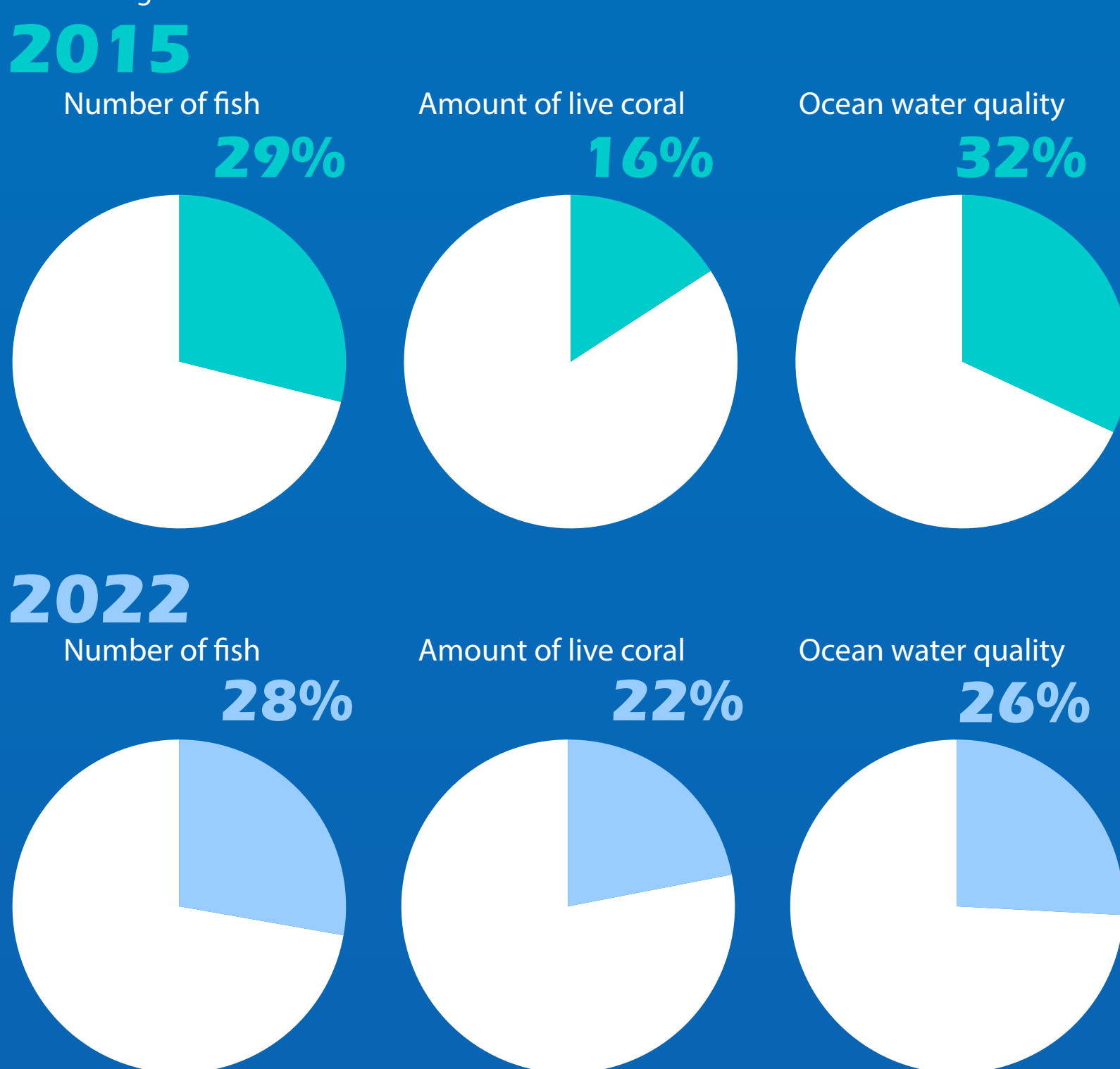
Trends from Socioeconomic Surveying in Puerto Rico

NOAA's Coral Reef Conservation Program monitors the biological, socioeconomic, and climate conditions of U.S. coral reefs and communities through the National Coral Reef Monitoring Program (NCRMP). The Socioeconomic Component of the NCRMP collects and monitors knowledge, attitudes, and perceptions of coral reefs and coral reef management, human use of coral reef resources, and demographics of the populations living in coral reef areas. The trends shown below are based on survey results between the first (2015) and second (2022) monitoring cycles conducted in Puerto Rico.



Perceived Current Resource Conditions

Residents were asked how they perceive the current condition of certain marine resources in Puerto Rico. The percentage of residents who believed the resource was in good condition is shown below.

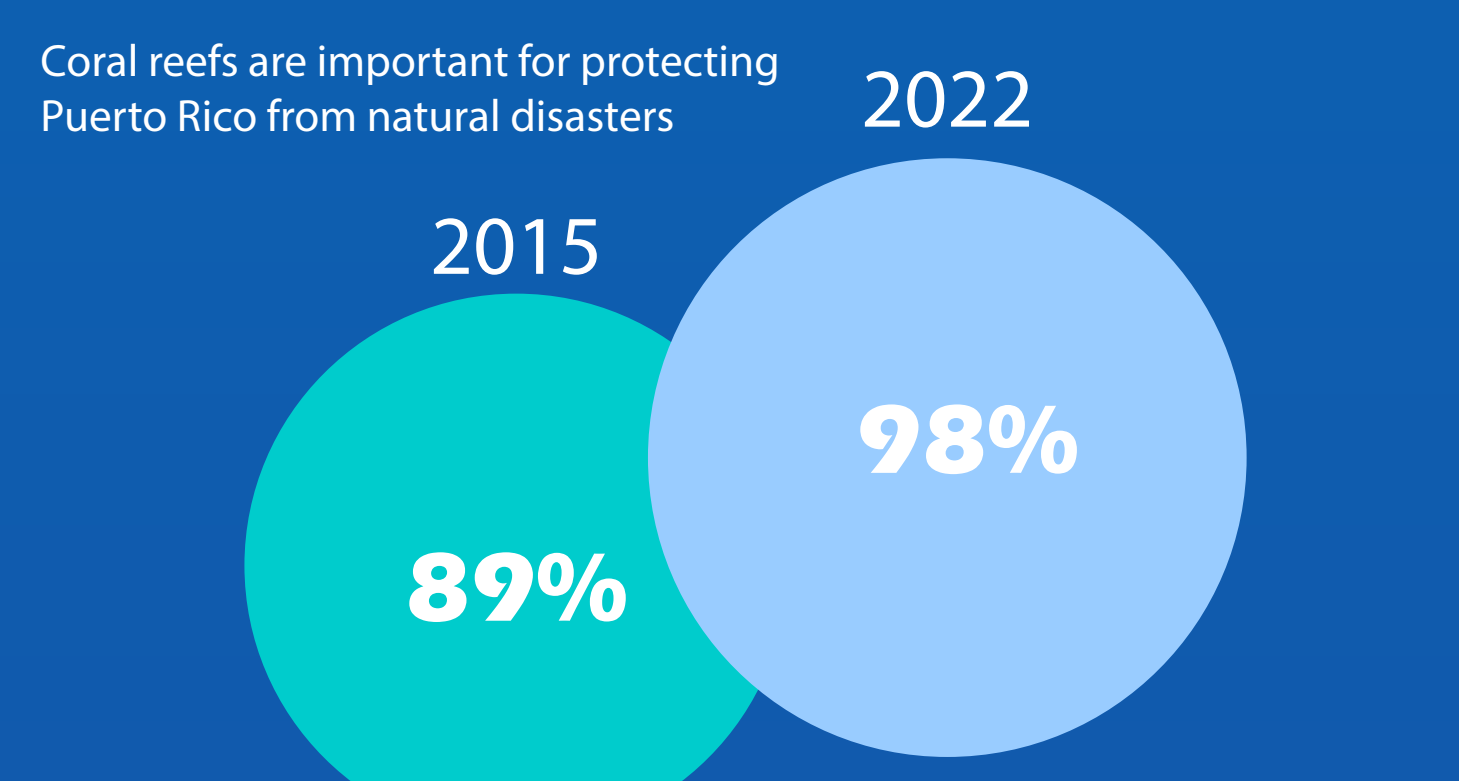


Key Takeaway ←

Residents were less likely to think that ocean water quality and the number of fish were in good condition.

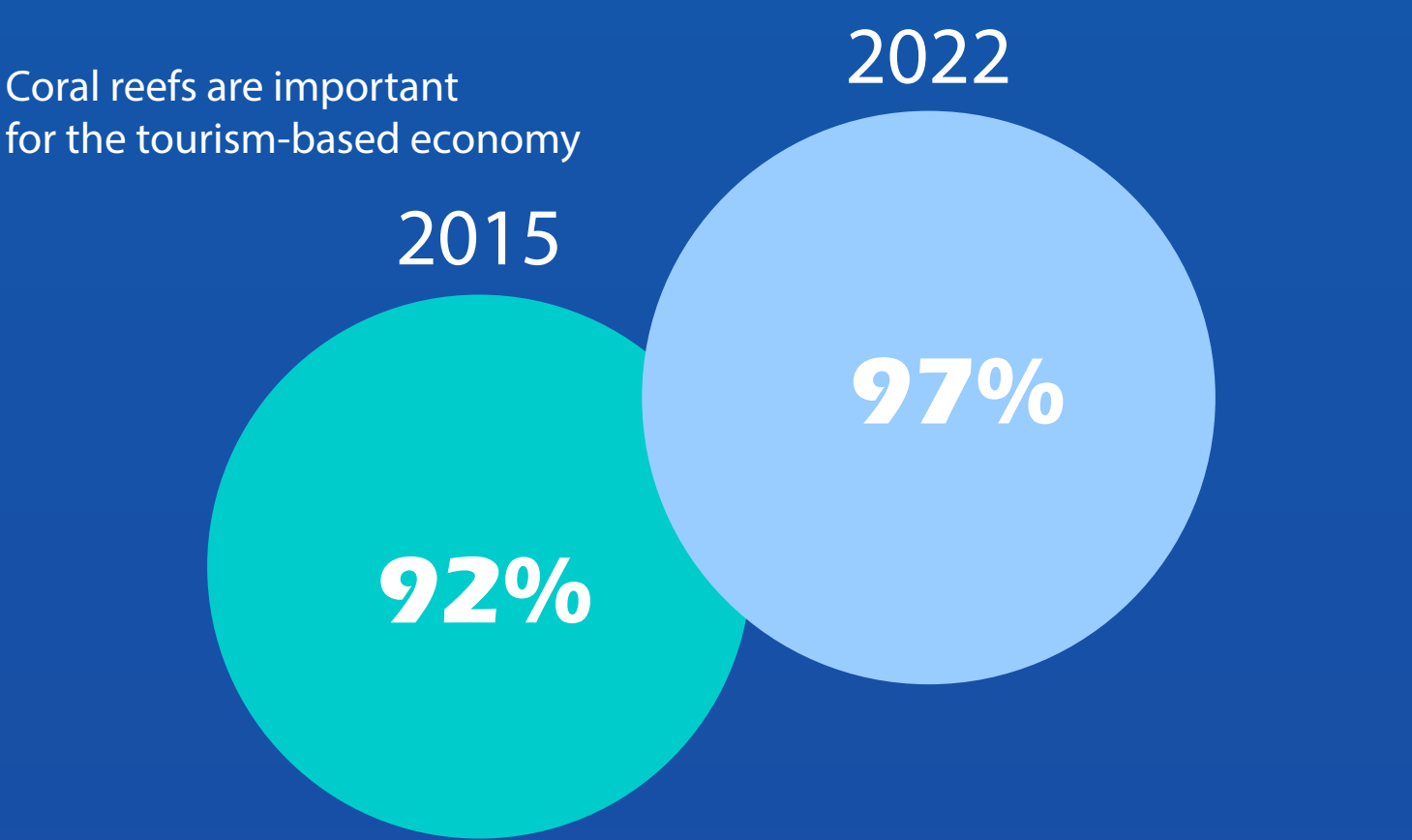
Importance of Coral Reefs

Residents were asked whether they agreed that coral reefs were important to certain items. The percentage of residents who agreed or strongly agreed is shown below.



Key Takeaway →

The percentage of residents who believed coral reefs are important for protecting Puerto Rico from natural disasters increased.

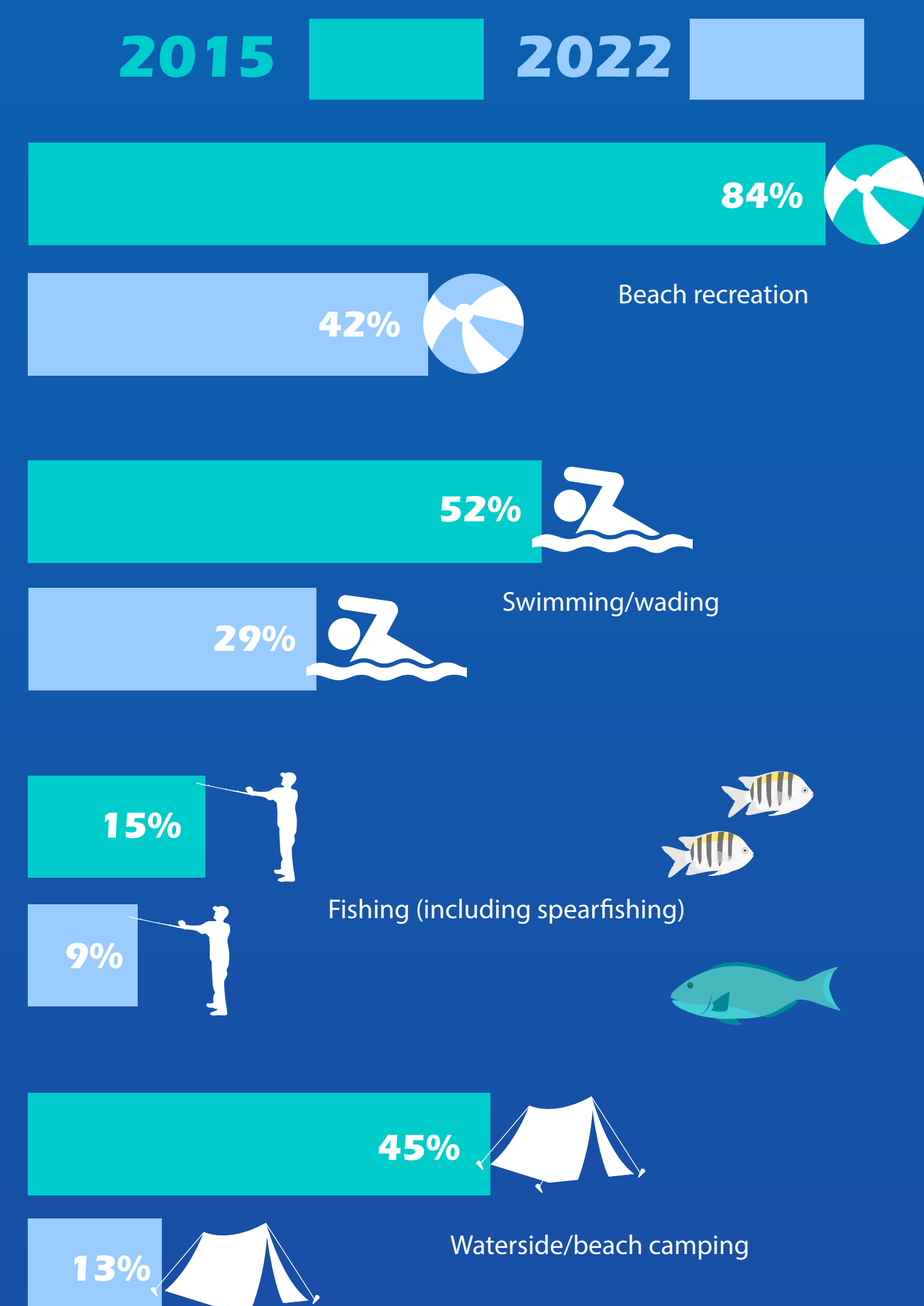


Key Takeaway →

The percentage of residents who believed coral reefs are important for supporting the tourism-based economy increased.

Activity Participation Rates

Residents were asked for their participation in certain marine-based recreational activities. Activity participation rates for some of these activities are shown below.



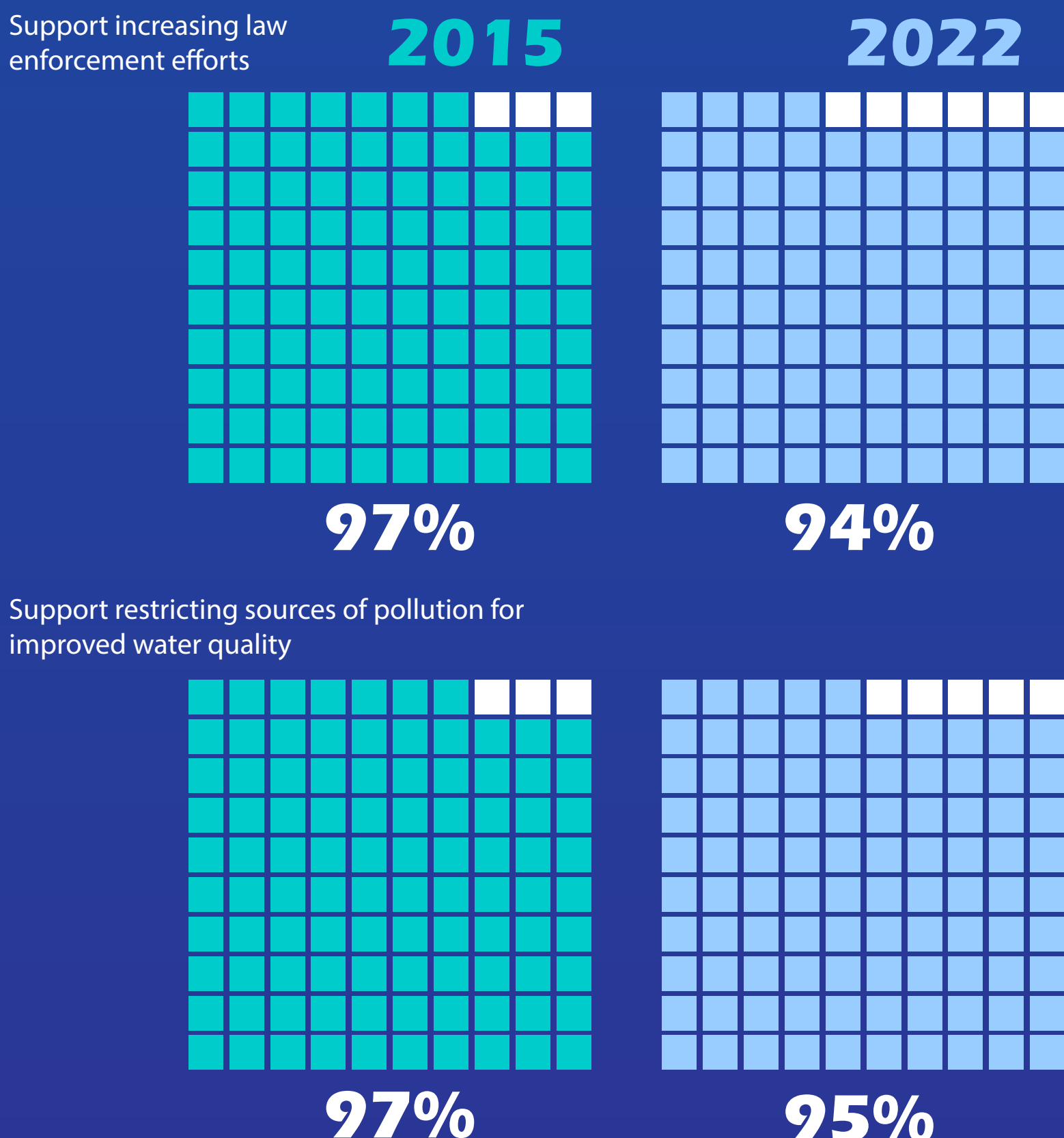
Key Takeaway ←

Participation in various marine-based activities largely decreased.

The percentage of residents familiar with marine protected areas and natural preserves increased by 48% in 2022

Support for Management

Residents were asked if they opposed or supported various management strategies. The percentage of residents who supported or strongly supported is shown below.



Key Takeaway →

Support for management strategies slightly decreased, but remained very high overall.

Threat Familiarity

Residents were asked for their familiarity with potential threats to coral reefs. Most and less familiar threats are shown below.



Key Takeaway ←

Residents were most familiar with the threats of pollution and marine litter in both years.