

Coral Reef Food Web



NOAA
CORAL REEF
CONSERVATION PROGRAM



- Phytoplankton**
 1. Diatom, *Chaetoceros* sp.
 2. Foraminifera
 3. Acantharian amoeba
 4. Dinoflagellates
- Zooplankton**
 5. Copepod
 - 5'. Copepod nauplius larvae
 6. Crab zoea larvae
 7. Gastropod veliger larvae
 8. Foraminifera
 9. Radiolarian
- Reef-building corals**
 10. Blue octocorals, *Heliopora coerulea*
 11. *Acropora* sp.
 12. *Platygyra daedalea*
 13. *Astreopora* sp. & *Pocillopora* sp.
 14. *Pocillopora elegans*
 15. *Lobophyllia corymbosa*
 16. *Goniastrea* sp. & *Acropora* sp.
- Macroalgae**
 18. Crustose coralline algae
 19. *Dictyota* sp.
 20. *Padina* sp.
 21. *Halimeda* sp.
- Fish**
 23. Pyramid butterflyfish
 24. Blue sprat, "baitfish"
 25. Yellowtail fusiliers
 26. Surgeonfish
 27. Scribbled rabbitfish
 28. Reticulated & Threadfin butterflyfish
 29. Steephead parrotfish
 30. Slingjaw wrasse
 31. Humphead Wrasse
 32. Titan triggerfish
 33. Scrawled filefish
 34. Regal angelfish
 35. Porcupine pufferfish
 36. Yellowstripe goatfish
 37. Yellowtail wrasse
 38. Redmouth grouper
 39. Blackfin barracuda
 40. Blacktip shark
 41. Spotted eagle ray
- Reptiles**
 42. Hawksbill sea turtle
- Other invertebrates**
 17. Giant Clam, *Tridacna* sp.
 43. Crab, *Trapezia* sp.
 44. Snail, *Drupella* sp.
 45. Crown of thorns seastar, *Acanthaster planci*
 46. Cushion star, *Culcita novaguineana*
 47. Rock-burrowing urchin, *Echinometra* sp.
 48. Diademnid urchin, *Echinothrix* sp.
 49. Crinoid, *Comanthus* sp.
 50. Gorgonian seafan, *Annella mollis*
 51. "Featherduster" tubeworm, *Sabellid* sp.
 52. Sponge, *Aplysilla* sp.
 53. Lace coral, *Stylaster* sp.
 54. Crab, *Carpilius maculatus*
 55. Lobster, *Panulirus* sp.
 56. Tiger Cowrie, *Cyprae tigris*
 57. Triton trumpet, *Charonia tritonis*
 58. Jellyfish, *Aurelia aurita*
 59. Hermit crab
 60. Reef Squid, *Septoteuthis lessoniana*
 61. Tun snail, *Tonna pernix*
 62. Octopus, *Octopus cyanea*
 63. Sea-cucumber, *Thelenota ananas*
 64. Auger snail, *Terebra maculata*
 65. Digested sediment from Peanut worm, *Echiuroid* sp.
 66. Heart urchin
 67. Mantis shrimp
 68. Annelid worm, *Pherecarida* sp.

photography & layout: Dean M. Jacobson © 2006

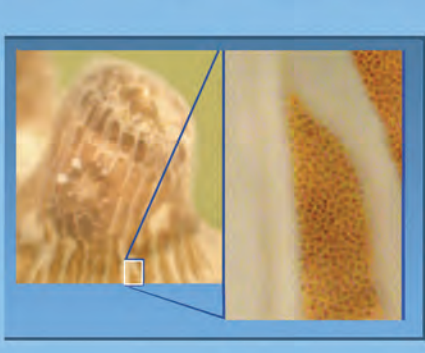


Coral Reefs & Zooxanthellae



Zooxanthellae are tiny single-celled algae that live inside tropical coral reefs.

These algae photosynthesize energy from the sun and provide most of the food for corals.



Corals are animals, and each individual animal is called a coral polyp.

Close up of a table coral polyp with millions of zooxanthellae living within its tissue.



Poster adapted and printed by NOAA Coral Reef Conservation Program: <http://coralreef.noaa.gov/>

Original version produced by the Commonwealth of the Northern Mariana Islands. Contributors: The government of the Commonwealth of the Northern Mariana Islands (CNMI), including Division of Fish & Wildlife, Coastal Resources Management, Division of Environmental Quality, and CNMI Marine Monitoring Team. Other contributors include: College of the Marshall Islands, Marshall Islands Conservation Society, and the Micronesia Challenge. Special thanks to the following individuals: Fran Castro, Peter Houk, Greg Moretti, Lihla Noori and John Stamer.

For more information on CNMI coral reefs, go to: <http://www.cnmicoralreef.net/>
Select photos courtesy of John P. Hoover.