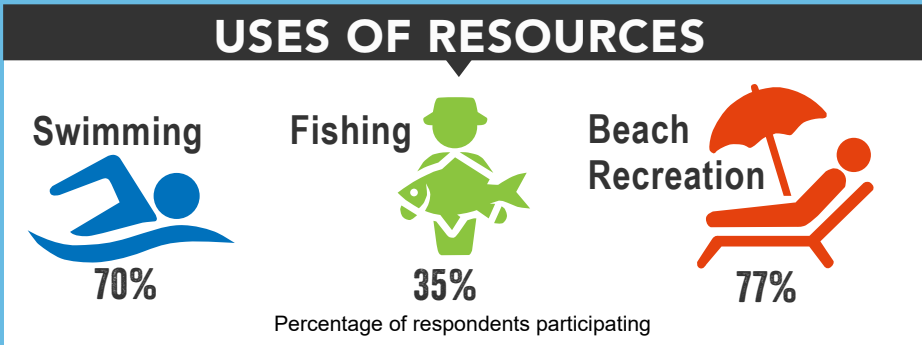
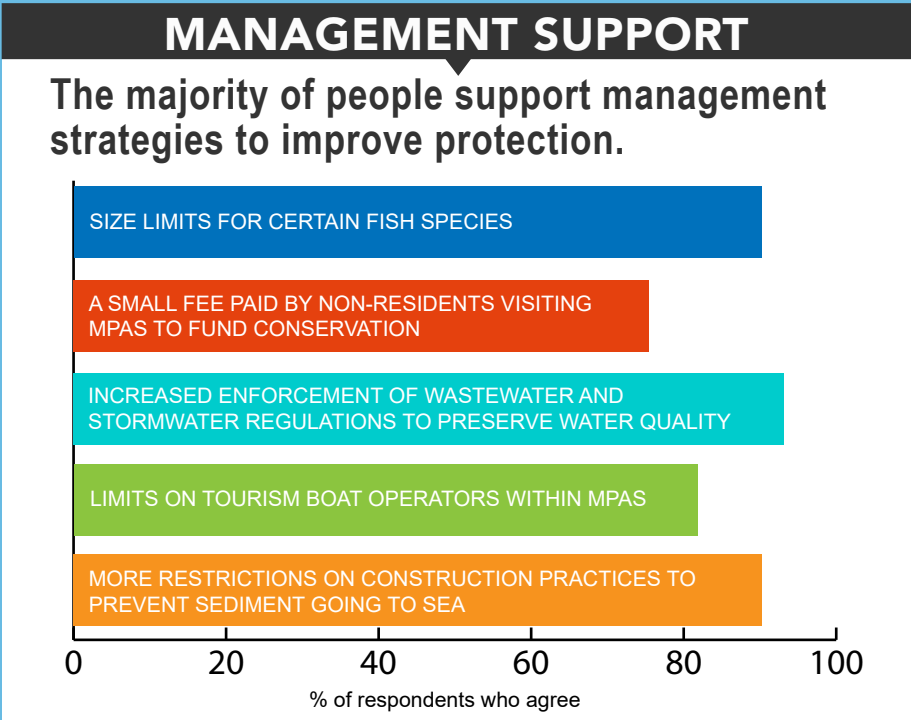


CONNECTIONS BETWEEN CORAL REEFS & COASTAL COMMUNITIES

NOAA’s Coral Reef Conservation Program monitors the biological, socioeconomic, and climate conditions of US coral reef areas and communities. This includes collection of socioeconomic variables including demographics, human use of coral reef resources, as well as knowledge, attitudes, and perceptions of coral reefs and coral reef management through the use of surveys and existing data. The takeaways below are based on the survey results for The Commonwealth of Northern Mariana Islands.

TAKEAWAYS FROM THE COMMONWEALTH OF NORTHERN MARIANA ISLANDS

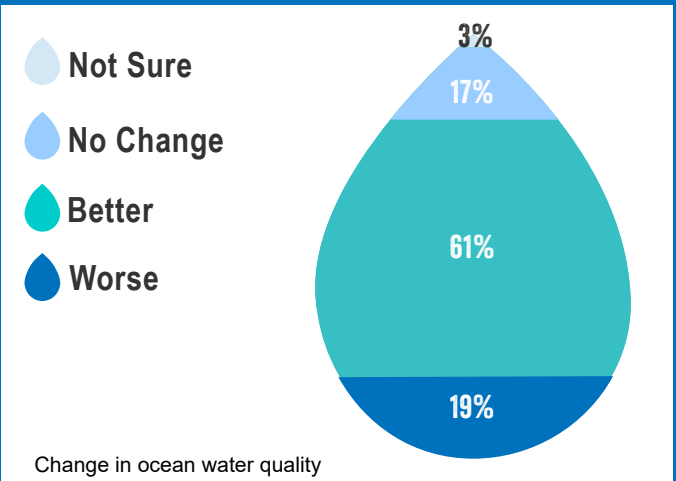
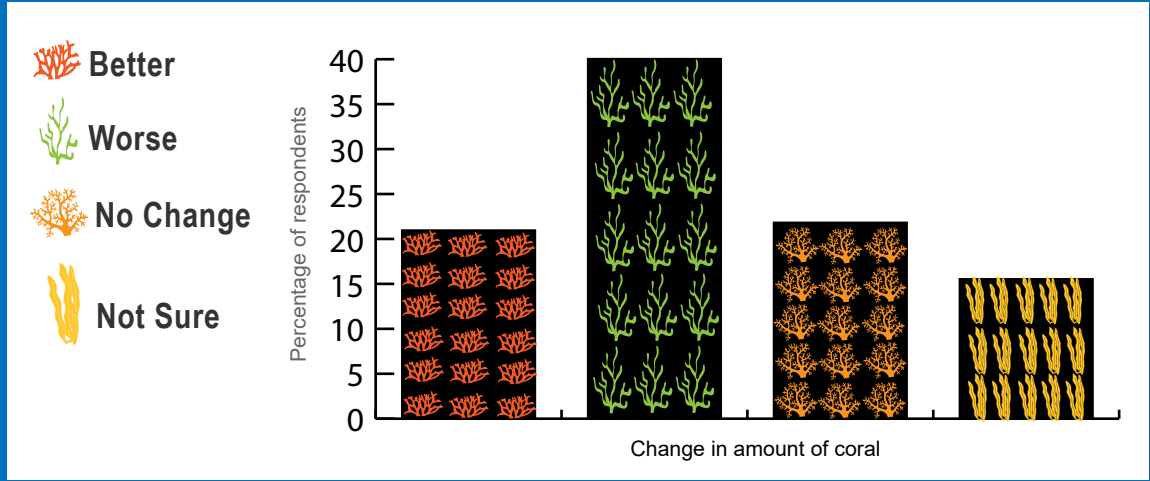


TENURE & CONDITION

Residents who have lived in the CNMI their entire lives have a more negative perception concerning the condition of marine resources.

PERCEPTIONS

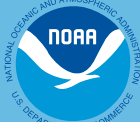
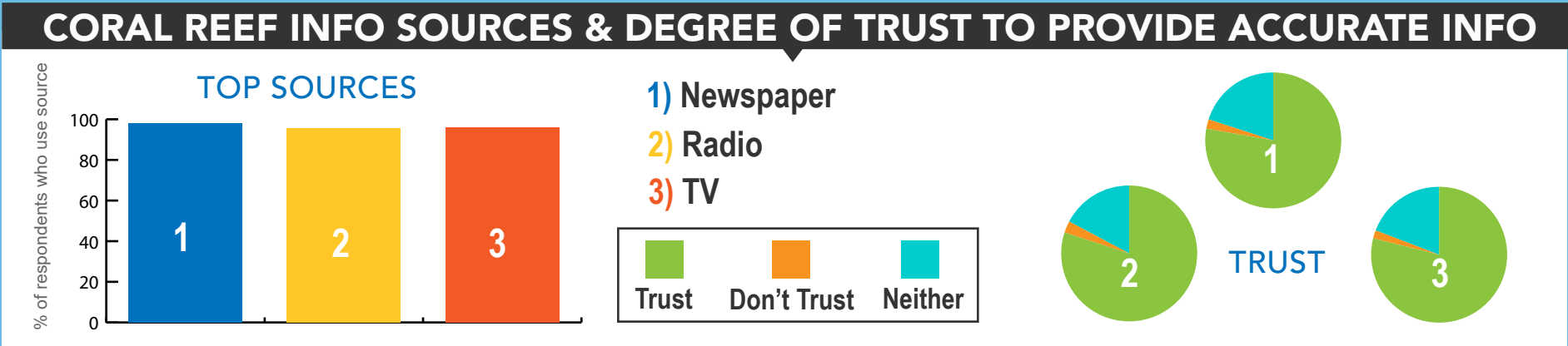
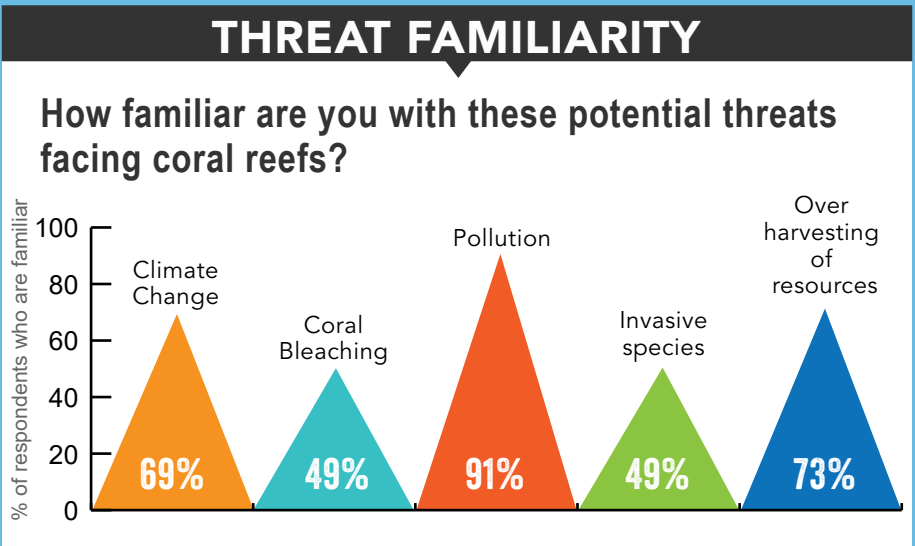
PARTICIPANTS WERE ASKED HOW THE AMOUNT OF CORAL AND CONDITION OF OCEAN WATER QUALITY HAS CHANGED IN THE PAST 10 YEARS...



VALUES & AWARENESS

1. CNMI residents who agreed that “coral reefs are important to my island’s culture” were more likely to fish/gather for marine resources more frequently.

2. CNMI residents who agreed that “coral reefs protect CNMI from erosion and natural disasters” were more likely to agree with various proposed coral reef management options.



The survey was conducted for a random stratified sample of households on the islands of Saipan, Tinian, and Rota, in the years 2016-2017. In comparing the sample to the total population of the Commonwealth of Northern Mariana Islands (CNMI), the data were determined to be representative, and therefore, the results are generalizable to the entire population of the jurisdiction. Data were collected through the telephone random digit dial survey method as well as the face to face interview method, and the total sample size for this survey was 722. The survey effort is used in conjunction with the collection of existing secondary data to monitor the socioeconomic conditions of the coral jurisdictions over time. For more information, please see the NCRMP Socioeconomic Component project page at <http://www.coris.noaa.gov/monitoring/socioeconomic.html>.